

DOES THE ORDER OR TIMING OF ACTIVE LABOR MARKET PROGRAMS MATTER?

Michael Lechner and Stephan Wiehler

Swiss Institute for Empirical Economic Research (SEW)



This version: March, 2008

Date this version has been printed: 12 March 2008

INTERNET APPENDIX

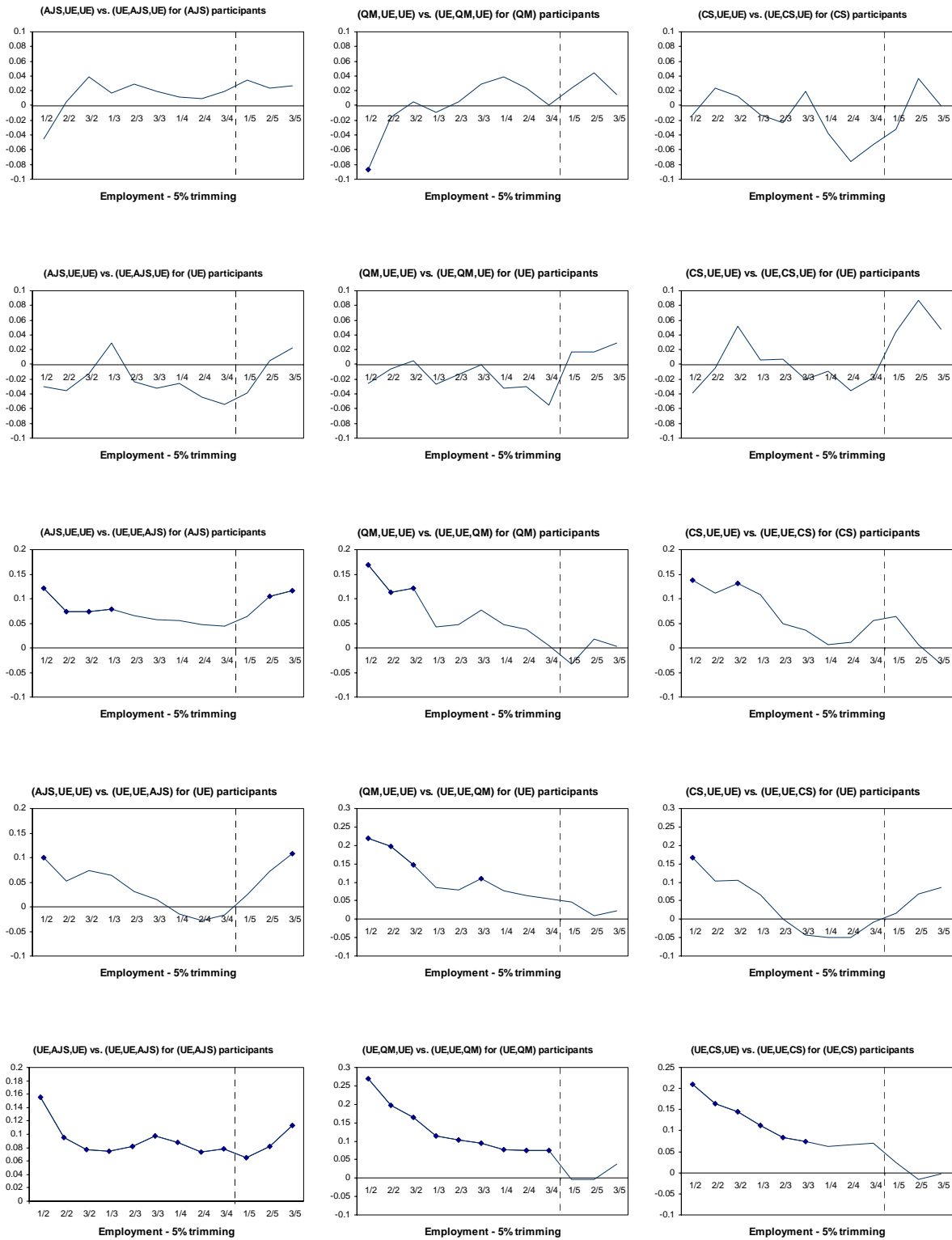
(AVAILABLE AT *www.siaaw/lechner/at* AND POSSIBLY
THE JOURNALS' WEBPAGE)

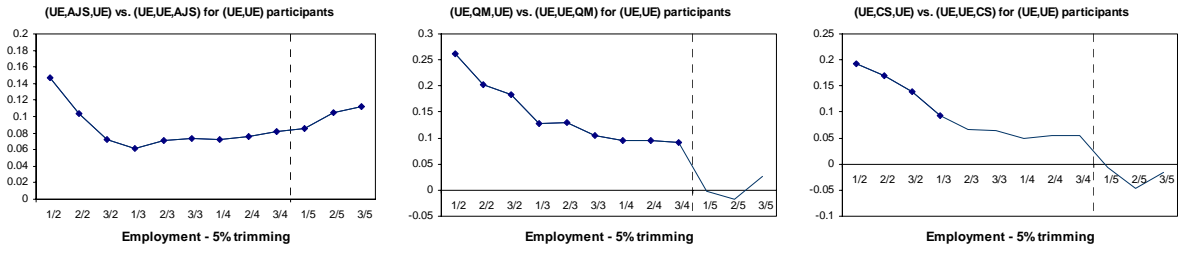
Keywords: Active Labor market policy, matching estimation, program evaluation, panel data.

JEL classification: J68

Address for correspondence: Michael Lechner, Professor of Econometrics, Swiss Institute for Empirical Economic Research (SEW), University of St. Gallen, Varnbühlstrasse 14, CH-9000 St. Gallen, Switzerland, Michael.Lechner@unisg.ch, www.siaaw.unisg.ch/lechner.

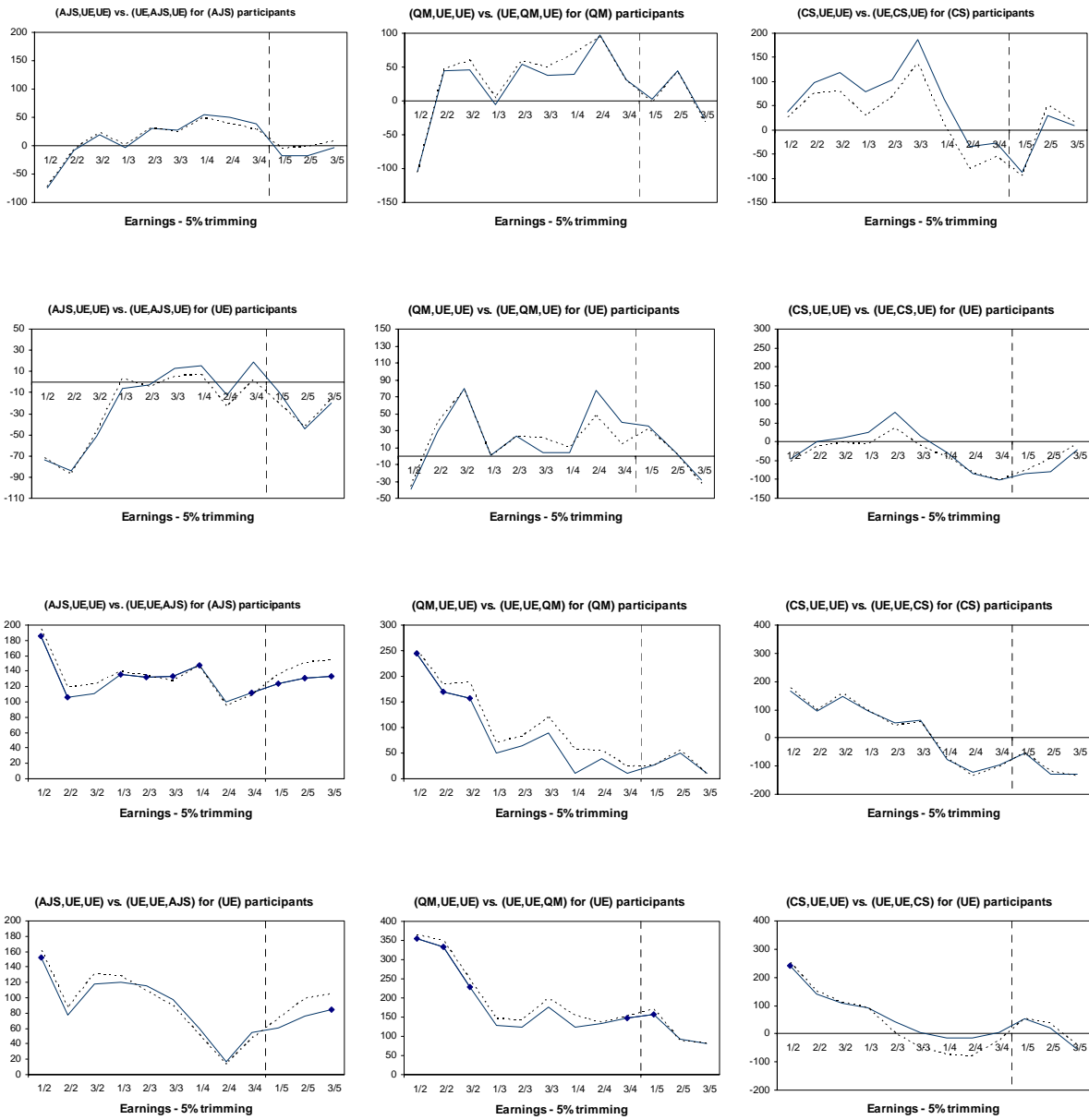
Figure A1: Effects of timing on employment

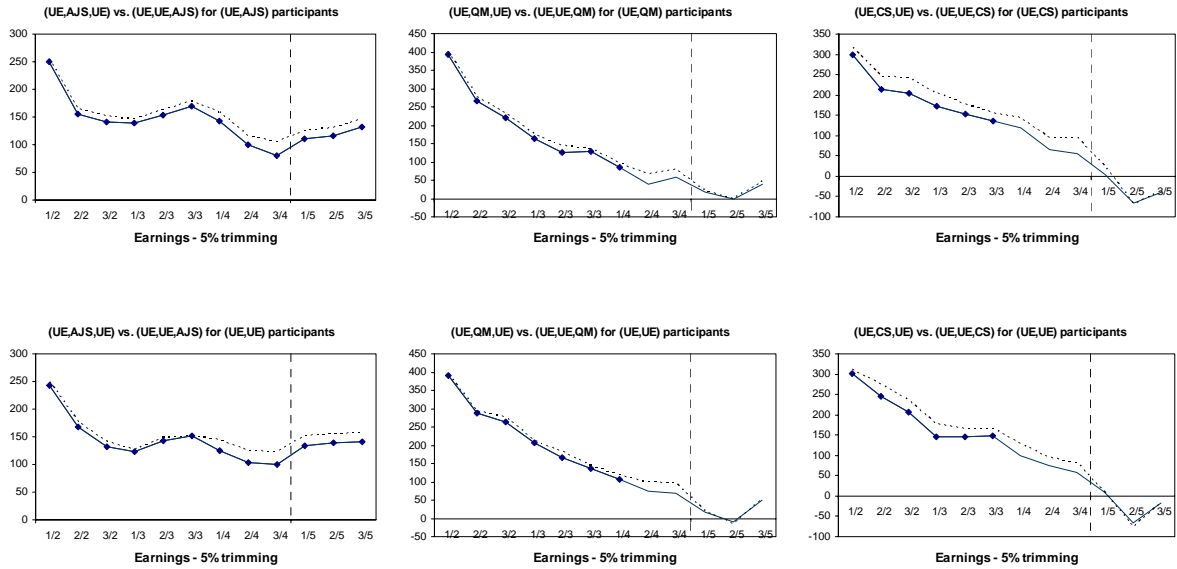




Note: UE: Unemployment, AJS: active job search, QM: qualification measure. Symbols on the curves denote again significance at the 5% level.

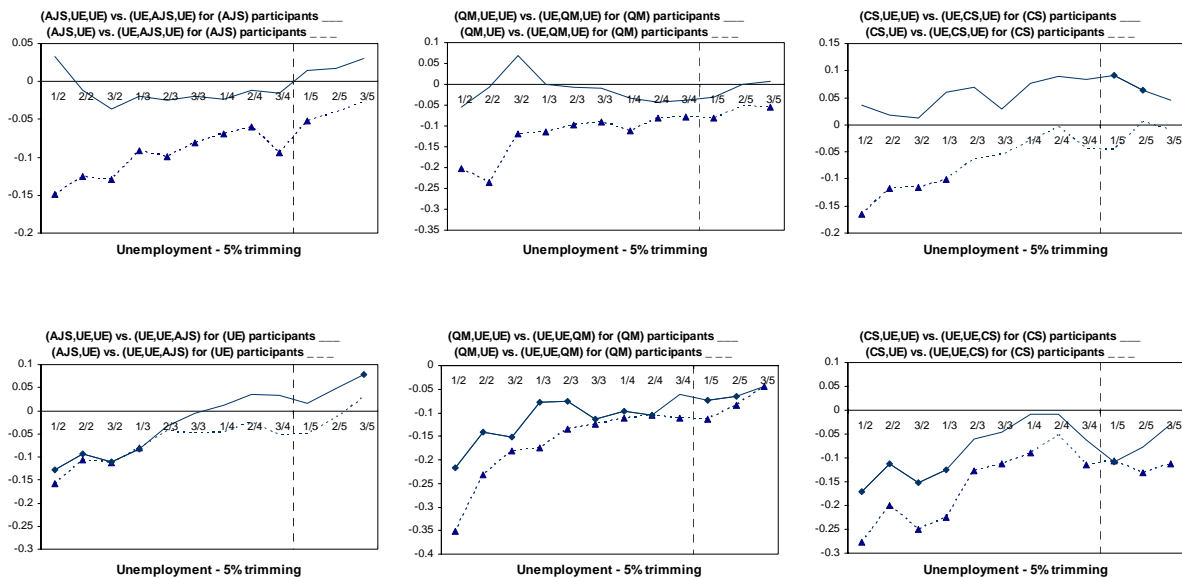
Figure A2: Effects of timing on earnings





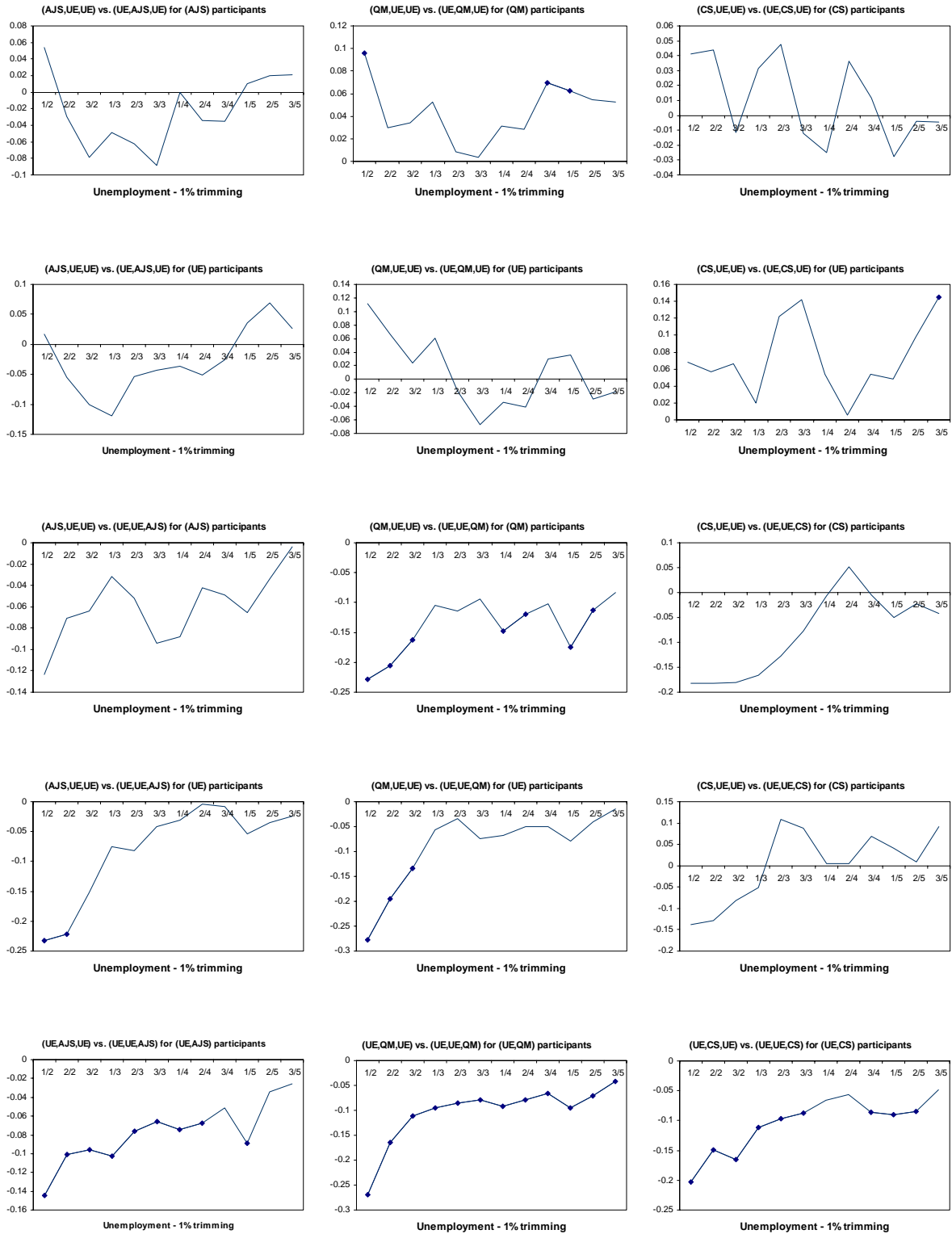
Note: UE: Unemployment, AJS: active job search, QM: qualification measure. Symbols on the curves denote again significance at the 5% level. **Dotted curve:** Non-negligibly, we observe employment partially with missing earnings information. In order to include earnings in our analysis, we recode missing earnings as zero and construct a dummy variable with value one whenever we observe such a case and estimate the impact of a sequence on the latter. We then rescale the weighted sum per sequence and report the difference to assess the magnitude of the error that occurs. In general, our interpretation is not much affected by this issue. For a more elaborate treatment of earnings effects see again Lechner and Melly (2007).

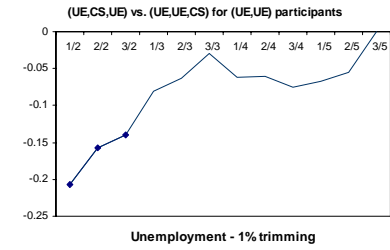
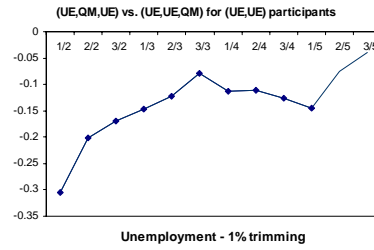
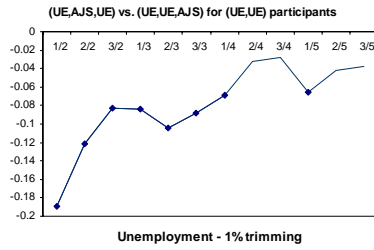
Figure A3: Relaxing the unemployment restriction



Note: UE: Unemployment, AJS: active job search, QM: qualification measure. We test for the sensitivity of our results by conditioning on only one UE spell after the initial program trimester. Solid lines represent the original results and dashed line the sensitivity checks. Symbols on the curves denote again significance at the 5% level.

Figure A4: Reducing the trimming level to 1% - effects on unemployment





Note: UE: Unemployment, AJS: active job search, QM: qualification measure. Symbols on the curves denote again significance at the 5% level.